

*Ice  
Theatre  
New York*

THE NATION'S PREMIER  
ICE DANCE ENSEMBLE

# ICE:DANCE



October 19, 2013 - Boston, MA • October 20, 2013 - Plymouth, NH  
October 24 - 26, 2013 - New York, NY

---

**ICE THEATRE BENEFIT GALA • October 25, 2013**

Honoring **Kurt Browning** and **Sonia Rodriguez**

Ice Angel Award to **Clare Bowes Sheridan**

**Featuring Three World Premieres**

**Reveries** by Edward Villella • **Doodlin'** by Charles Klapow • **Roots** by Douglas Webster



porter  
flying refined

# Land right in downtown Toronto.

Frequent daily service to downtown Toronto  
from New York, Boston, and seasonal service  
from Burlington, Vermont.



[flyporter.com](http://flyporter.com)



THE NATION'S PREMIER  
ICE DANCE COMPANY

## 2013 HOME SEASON – ICE:DANCE

Boston, MA • October 19, 2013  
Plymouth, NH • October 20, 2013  
New York, NY • October 24 & 26, 2013

FOUNDER/DIRECTOR

Moira North

ARTISTIC DIRECTOR

Douglas Webster

EXECUTIVE DIRECTOR

Jirina Ribbens

BALLET MISTRESS

Judy Blumberg

ITNY PUBLIC RELATIONS

Roberto Santiago

ICE THEATRE OF NEW YORK

Elisa Angeli, Brent Bommentre, Ryan Bradley, Eve Chalom,  
Tyrrell Gene, Patrick Connelly, Joel Dear, Carly Donowick, Jonathon Hunt,  
Jessica Huot, John Kerr, Kim Navarro, Erin Reed and Natalia Zaitseva

LIGHTING DESIGNER

Chenault Spence

PRODUCTION STAFF

Rena Rané Waits • Tinc Design and Productions

OFFICE STAFF

Florence Gallez • Allyson Pavone



*Ice Skating Institute*

## **Proud Supporter of the Ice Theatre of New York *and* the Wonderful World of Ice Skating**

Since pioneering the country's first national learn-to-skate program 50 years ago, ISI has introduced more than 5 million individuals to the wonderful world of ice skating. ISI offers programs and events for everyone, from those who just want to skate for fun to aspiring elite competitors. In fact, many U.S. national champions and Olympians started in ISI programs!

***2012 Recipient ITNY Arts & Business  
Partnership Award***

**skateisi.org**

# Ice Theatre of New York

THE NATION'S PREMIER  
ICE DANCE ENSEMBLE

## ABOUT THE COMPANY

### Board of Trustees

Joan Erdheim  
Chair

Missy VanBuren  
Vice Chair

Moira North  
President

William J.  
Candee IV  
Secretary

Joan Fallon  
Treasurer

Lori Berlin

Jessica Betts

Frances Black

William J.  
Candee III

Natalie Carey

Violet Eagan

Alicia Ernst

Mary Gaillard

Michel Mercure

Susan Numeroff

Nancy Quaife

Nanci Quesada

Markian Silecky

### Staff

Moira North,  
Founder/Director

Douglas Webster  
Artistic Director

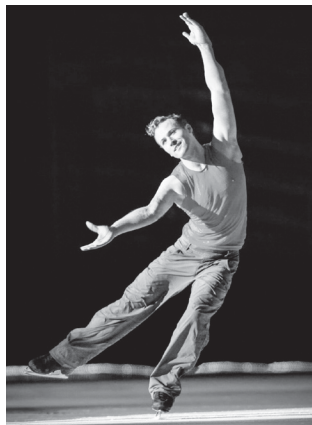
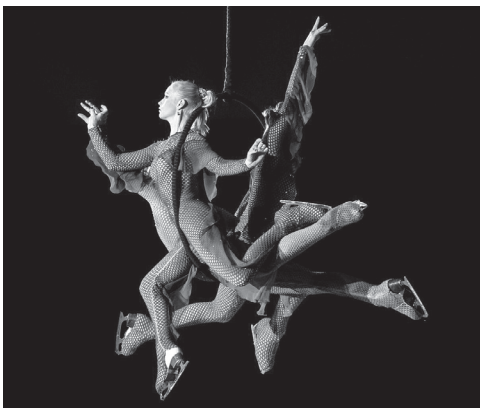
Jirina Ribbens  
Executive  
Director

Founded in 1984 by Moira North, Ice Theatre of New York (ITNY) has changed the face of figure skating by creating works that integrate the sensibilities of movement, music and art. Its mission is to elevate dance on ice as a performance art. Through its performances in both traditional and site-specific venues, ITNY presents ice dance that opens one's eyes to seeing skating in unexpected ways.

ITNY was the first ice dance company to receive dance program funding from the

National Endowment for the Arts, the New York State Council on the Arts and the New York City Department of Cultural Affairs. In addition to building and performing works of artistic merit,

ITNY also reaches out to the next generation of skaters and audiences through education, community outreach and training programs.



*"Since its establishment in 1984, the Ice Theatre of New York has combined the best of ice skating, dance and theater to create cutting edge performances that represent the very best New York's creative community has to offer."*

— Mayor Michael Bloomberg



THE NATION'S PREMIER  
ICE DANCE ENSEMBLE

## 2013 HOME SEASON ICE:DANCE

Boston, MA • October 19, 2013

Plymouth, NH • October 20, 2013

New York, NY • October 24 - 26, 2013

(program subject to change)

### ACT 1

#### ROOTS

Choreography by Douglas Webster (2013)

Music: Mumford and Sons, Audrae Mae, and Jason Castro: Awake My Soul, Unclouded Day,  
Hallelujah, Hold on to What You Believe

Costumes by Douglas Webster, generously donated by The Goldmine in Sun Valley

**Performed by Brent Bommentre, Ryan Bradley, Eve Chalom Joel Dear, Carly Donowick,  
Jonathon Hunt, John Kerr, Kim Navarro, Erin Reed and Natalia Zaitseva**

Roots is a piece in 4 movements about redemption, joy, and a celebration  
of the human spirit in an Appalachian Style Revival.

---

#### HEART

Choreography by JoAnna Mendl Shaw (1999)

Music by Mouth Music

Costumes by JoAnna Mendl Shaw and Douglas Webster

**Performed by Elisa Angeli, Patrick Connelly, Tyrell Gene and Jessica Huot**  
Commissioned by NYSCA

Heart is based on the opening gesture phrase that suggests the linkage of heart and mind.  
Sometimes our heart and our brain operate in agreement, sometimes at cross purposes.

---

#### HORIZON

Choreography by Douglas Webster (2012)

Music by Autumn Music 1: Dan Richter

Costumes by Jennifer Langeberg from the Charles Schulz family collection

**Performed by Brent Bommentre, Carly Donowick, Jonathon Hunt,  
John Kerr, Kim Navarro and Natalia Zaitseva**

Created while looking at the oceans in Maine and the mountains of Sun Valley, Horizon is about space  
and how we move through it. In this piece Douglas Webster explores his themes of arcing space.

“She sensed the promise of speed, flow and freedom.”

This piece is dedicated to Nancy Angell Streeter and her joy of skating.

## INCLUSIONS

Choreography by Alberto Del Saz (1994)

Music by Steppe & Passages: René Aubry

Costumes Ice Theatre of New York

**Performed by Eve Chalom, Patrick Connelly, Joel Dear and Tyrrell Gene**

Commissioned by NYSCA

Inclusions looks into the deepest molecular structures of a rock formation from its most simple combination to the most complicated refined outcome. The quality of this study deals with sharp angles, clean movement, the skaters use their bodies to manipulate the space as well as to create relations among them that suggest the qualities of coolness, purity, strength, vibrancy and beauty that become specific way of moving through space.

---

## DOODLIN' *Premiere*

Choreography by Charles "Chucky" Klapow (2013)

Music by Dizzy Gillespie: Birks Works

Costumes by Jennifer Langeberg from the Charles Schulz family collection

**Performed by Ryan Bradley, Jonathon Hunt, Erin Reed and Natalia Zaitseva**

Commissioned by Ice Theatre of New York

A Gang of Infamous Criminals reminisce together about their glory days of gettin' away with it all!

---

## REVERIES *Premiere*

Choreography by Edward Villella (2013)

Music by Pyotr I. Tchaikovsky, Orchestral Suite #3 in G Major

Costumes by Karen Young

**Performed by Principals: Kim Navarro and Brent Bommentre**

**Ensemble: Elisa Angeli, Eve Chalom, Patrick Connelly, Joel Dear,**

**Carly Donowick, Tyrell Gene, Jessica Huot and John Kerr**

Commissioned by Ice Theatre of New York

A romantic ice ballet that explores a beloved theme in classical dance:  
the artist seeking his unattainable muse.

---

## PAUSE

---

## ACT 2

### TRANSITIONS: In four acts

Choreography by Douglas Webster (1999)

Music by String Quartet number 3, Mishima Composed by Phillip Glass

Played by Kronos Quartet

Costumes by Leo Iturregui

**Performed by Joel Dear as the Central Figure**

**Corps: Brent Bommentre, Tyrrell Gene, John Kerr, Kim Navarro and Erin Reed**

1. Anger - 2. Despair - 3. Acceptance - 4. Release

This piece explores the transition from anger to despair, from acceptance to celebration of the ultimate release from fear of a single person's confrontation with his own mortality through an HIV + diagnosis. Five company members personify his emotional stages.

### **FALLING LEAVES**

Choreography by Douglas Webster (2011)  
Music by Michael Nyman from the film *The Piano*  
Costumes by Katherine Patterson McDowell  
**Performed by Elisa Angeli and Jessica Huot**  
Commissioned by The Will Sears Fund

The reflection of two leaves and how they move through space being tossed about by the wind.

---

### **DARE GREATLY**

Choreography by Douglas Webster (2009)  
Music: *Fix You* by Coldplay arranged and played by The Vitamin String Quartet  
Costumes by Katherine Patterson McDowell  
**Performed by: Eve Chalom, Carly Donowick and Natalia Zaitseva**  
Commissioned by The Will Sears Fund

Dare Greatly Examines the Courage to Be and Trusting in the face of Sorrow and Despair.

---

### **FRAGILE**

Music: *Fragile* by Sting  
Choreography by Douglas Webster (2013)  
**Performed by Ryan Bradley**  
Costume by Douglas Webster

A poem for the world today and a response to *Transitions*, *Falling Leaves* and *Dare Greatly*.

---

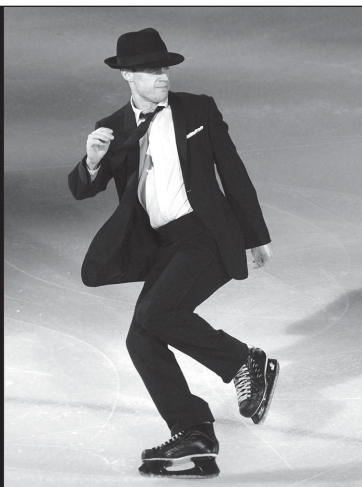
### **UNFORGETTABLE**

Choreography by Douglas Webster (2012)  
Music from the Motion Picture *The Artist*  
Composed by Ludovic Bource  
Costumes by Jennifer Langeberg from the Charles Schulz family collection  
& Pair costume by Alicia Jackson  
**Performed by Leading Lady: Erin Reed**  
**Leading Man: Ryan Bradley**  
**Dream Pair: Natalia Zaitseva and Jonathon Hunt**  
**Ice Dance Ballet: Elisa Angeli, Brent Bommentre, Eve Chalom, Patrick Connelly,**  
**Joel Dear, Carly Donowick, Tyrrell Gene, Jessica Huot, John Kerr and Kim Navarro**

This sweeping ice dance was created with our 2012 gala honoree Richard Dwyer in mind. A piece that recalls the famous *Follies* *Swing Waltz*, high style production, and of course, a romantic love story. This piece pays homage to our skating past and is a tribute to Richard “Mr. Debonair” Dwyer.



# ICE:DANCE



## 2013 ICE THEATRE BENEFIT PERFORMANCE

Honoring Kurt Browning and Sonia Rodriguez  
Ice Angel Award to Clare Bowes Sheridan  
Friday, October 25, 2013

**FOUNDER/DIRECTOR**  
Moiria North

**ARTISTIC DIRECTOR**  
Douglas Webster

**EXECUTIVE DIRECTOR**  
Jirina Ribbens

**BALLET MISTRESS**  
Judy Blumberg

**ITNY PUBLIC RELATIONS**  
Roberto Santiago

**ICE THEATRE OF NEW YORK**  
Elisa Angeli, Brent Bommentre, Ryan Bradley, Eve Chalom, Tyrrell Gene,  
Patrick Connelly, Joel Dear, Carly Donowick, Jessica Huot, Jonathon Hunt,  
John Kerr, Kim Navarro, Erin Reed and Natalia Zaitseva

**LIGHTING DESIGNER**  
Chenault Spence

**PRODUCTION STAFF**  
Rena Rané Waits • Tinc Design and Productions

**OFFICE STAFF**  
Florence Gallez • Allyson Pavone

(program subject to change)

**ROOTS *Premiere***

Choreography by Douglas Webster (2013)

Music: Mumford and Sons, Audrae Mae, and Jason Castro: Awake My Soul, Unclouded Day,  
Hallelujah, Hold on to What You Believe

Costumes by Douglas Webster, generously donated by The Goldmine

**Performed by Brent Bommentre, Ryan Bradley, Eve Chalom Joel Dear,  
Carly Donowick, Jonathon Hunt, John Kerr, Kim Navarro, Erin Reed and Natalia Zaitseva**

Roots is a piece in 4 movements about redemption, joy, and a celebration  
of the human spirit in an Appalachian Style Revival.

---

**Hommage to Hockey**

**Performed by Kurt Browning**

---

**HEART**

Choreography by JoAnna Mendl Shaw (1999)

Music by Mouth Music

Costumes by JoAnna Mendl Shaw and Douglas Webster

**Performed by Elisa Angeli, Patrick Connelly, Tyrell Gene and Jessica Huot**

Commissioned by NYSCA

Heart is based on the opening gesture phrase that suggests the linkage of heart and mind.  
Sometimes our heart and our brain operate in agreement, sometimes at cross purposes.

---

**DOODLIN' *Premiere***

Choreography by Charles "Chucky" Klapow (2013)

Music by Dizzy Gillespie: Birks Works

Costumes by Jennifer Langeberg from the Schulz family collection directed by Karen Kresge

**Performed by Ryan Bradley, Jonathon Hunt, Erin Reed and Natalia Zaitseva**

Commissioned by Ice Theatre of New York

A Gang of Infamous Criminals reminisce together about their glory days of gettin' away with it all!

---

**REVERIES *Premiere***

Choreography by Edward Villella (2013)

Music by Pyotr I. Tchaikovsky, Orchestral Suite #3 in G Major

Costumes by Karen Young

**Performed by Principals: Kim Navarro and Brent Bommentre**

**Ensemble: Elisa Angeli, Eve Chalom, Patrick Connelly, Joel Dear,**

**Carly Donowick, Tyrell Gene, Jessica Huot and John Kerr**

Commissioned by Ice Theatre of New York

A romantic ice ballet that explores a beloved theme in classical dance:  
the artist seeking his unattainable muse.

**SINGIN' IN THE RAIN**  
Choreography by Sanda Bezic  
Music by Nacio Herb Brown and Arthur Freed  
**Performed by Kurt Browning**

---

**UNFORGETTABLE**  
Choreography by Douglas Webster (2012)  
Music from the Motion Picture The Artist  
Composed by Ludovic Bource  
Costumes by Jennifer Langeberg & Pair costume by Alicia Jackson  
**Performed by Leading Lady: Erin Reed**  
**Leading Man: Ryan Bradley**  
**Dream Pair: Natalia Zaitseva and Jonathon Hunt**  
**Ice Dance Ballet: Elisa Angeli, Brent Bommentre, Eve Chalom, Patrick Connelly, Joel Dear, Carly Donowick, Tyrrell Gene, Jessica Huot, John Kerr, and Kim Navarro**

This sweeping ice dance was created with our 2012 gala honoree Richard Dwyer in mind. A piece that recalls the famous Folies Swing Waltz, high style production, and of course, a romantic love story. This piece pays homage to our skating past and is a tribute to Richard "Mr. Debonair" Dwyer.

---

## **ABOUT THE EXECUTIVE STAFF**

**MOIRA NORTH** (Founder/Director) Named one of the 25 Most Influential Names in Figure Skating by International Figure Skating Magazine, Moira North has been a driving force in the development of figure skating as a performing art. Since founding Ice Theatre of New York in 1984, she has commissioned renowned dance choreographers to make new works for the company while nurturing and developing choreographers from the world of ice. She has also been a catalyst in the development of other artistic ice dance companies in both Canada and the United States. Moira and partner Patrick Dean skated Ice Theatre of New York's first work, a collaboration with Belgian dance choreographer Marc Bogaerts, which won them first place in the Free Dance at the Professional Championships in Jaca, Spain. In her subsequent work as Ice Theatre of New York Director, Moira has continued to integrate contemporary dance into the repertoire of ice choreography.

**DOUGLAS WEBSTER** (Artistic Director) Over the past 20 years, Douglas Webster has created a large body of repertory works for Ice Theatre of New York that includes Departures, Dare Greatly, Transitions, and Appalachia Waltz (in collaboration with modern dance choreographer Joanna Mendl Shaw). Douglas has helped set works by dance choreographers Donlin Forman, Elisa Monte, David Dorfman, David Parsons, Lar Lubovitch, and Ann Carlson for the ice. In addition to his work with Ice Theatre, Douglas has worked with all the major skating companies in the world, including Disney on Ice (10 shows, including High School Musical); Holiday on Ice (3 shows); Stars On Ice (2); and The Sun Valley Ice Show (3). He has also choreographed many television shows, including ITNY's participation in Winter Solstice on Ice; Skating with the Stars for ABC TV; and Sterren Dansen op Het IJs in The Netherlands. He helped create, choreograph, and direct

many park shows, including Ice Theatre's Dollywood Christmas on Ice production for the Dollywood Theme Park in Tennessee; and shows for the Autostadt Park in Germany, including "The Wizard of Oz!" Along with his work on major productions and industrial events, Douglas has also worked with many celebrity skaters, including most recently Olympic Champion Sarah Hughes and Olympic Medalist Sasha Cohen. For the past two years Douglas has been the Artistic Director of ITNY and he continues to be inspired by all the facets of the company.

**JIRINA RIBBENS** (Executive Director) joined the ITNY staff in December 2004, after serving on the board since the founding of the company. Over the past 9 years Jirina has overseen ITNY's growth, such as the doubling of ITNY's operations budget, the expansion of its outreach programming for public school children, and ITNY's entry into new media, including a collaboration with Improv Everywhere which received over 2.3 million views on You Tube. Prior to her work with ITNY Jirina worked in a variety of positions in the entertainment and sports industries. During her time at Candid Productions she produced and managed events with two-time Olympic Champion Dick Button. She also worked as an Olympic sports consultant and producer for the networks at nine Olympic Games. In 2002 she received a Sports Emmy for Outstanding Live Sports Special, as Associate Producer for NBC for the Salt Lake City Olympic Winter Games.

## **ABOUT THE CHOREOGRAPHERS**

**EDWARD VILLELLA** (Choreographer) Edward Villella has been recognized as the greatest male ballet dancer ever produced in America. A star at the New York City Ballet, he has received nearly every important honor given to artists in the United States. He showed the world that a tough brash kid out of Maritime College could turn into a major artist, and in doing so, changed the way men danced in America as well as the way male dancers were perceived. He has lectured all over the world. Mr. Villella has received nearly every important honor given to artists in the United States. He was appointed by President Johnson to the Presidents National Council of the Arts. In 1997 he was the recipient of the Kennedy Center Honors and was also awarded the National Medal of Arts by President Clinton. In 1999 The Dance Heritage Coalition named him as one of the first 100 of America's Irreplaceable Dance Treasures and in 2009 he was awarded a fellowship to the Academy of Arts and Sciences. Mr. Villella has honorary doctor of fine arts degrees from Fordham University, The Boston Conservatory of Music, Long Island University, the College of Charleston, Allegheny College, Skidmore College, Florida Atlantic University, Sienna College, St Thomas College and Florida State University. He was awarded the Doctor of Humane Letters from the University of North Carolina. Mr. Villella was the first American male dancer to perform with the Royal Danish Ballet, and the only American ever to be asked to dance an encore at the Bolshoi Theater in Moscow. He danced for President Kennedy's inauguration and for Presidents Johnson, Nixon and Ford. He was producer/director for the PBS series "Dance in America" for one and a-half years, and in 1975 won an Emmy Award for his CBS television production of "Harlequinade." He currently serves on the Board of Trustees of the School of American Ballet. In 1998, the University of Pittsburgh Press reissued Villella's 1992 autobiography, *Prodigal Son*:

Dancing for Balanchine in a World of Pain and Magic, written with Larry Kaplan. In 1986 Edward Villella founded the Miami City Ballet which garnered international acclaim. He was also the Faculty Chair for the Miami City Ballet School. He left in September 2012 and now resides in New York. On May 15, Mr. Villella will receive the 2013 Award for Distinguished Service to the Arts by the American Academy of Arts and Letters.

**CHARLES “CHUCKY” KLAPOW** (Choreographer) Charles “Chucky” Klapow is an Emmy award winning choreographer of Disney’s “High School Musical”. For over two decades, Chucky has performed and choreographed for many entertainers in television, film and stage productions all over the world. He returned from London after spending much of 2013 as choreographer for The Rolling Stones 50 & Counting tour. Born in 1980, Chucky began his dancing career age 12, dancing for Patti LaBelle, Celine Dion, Paula Abdul, and others in an all-star concert. By the time he was 15, Charles was an assistant to choreographer and mentor Marguerite Dericks. Charles created a dance company with choreography partner Wade Robson in the mid-1990s called L.A. Images. Chucky was brought on board by Kenny Ortega (original “Dirty Dancing” choreographer) to help choreograph “High School Musical” in 2006. Klapow also worked with Ortega and Bonnie Story as a choreographer for the film’s sequels, “High School Musical 2” (which earned Chucky his second Emmy award nomination) and “High School Musical 3: Senior Year.” Klapow was one of eleven dancers selected by Michael Jackson for his “This Is It” concert tour due to take place at The O2 Arena in London as a 50-show run. On July 7, 2009 Chucky took part in Jackson’s memorial service in Los Angeles. Chucky spent the Summer of 2010 as a TV reality show judge on “Don’t Stop Believing”, the UK’s search for the next all-singing, all-dancing group which aired on Channel Five. He has also choreographed for ABC’s “Skating With The Stars” and FOX’s “So You Think You Can Dance”. In November of 2011, Chucky served as choreographer/movement coach for Mick Jagger on the Will.I.Am music video “T.H.E. (The Hardest Ever)” featuring Jennifer Lopez and Mick Jagger. Chucky spent much of 2012 in Australia where he was a judge on “Young Talent Time”.

**JOANNA MENDEL SHAW** (Choreographer) JoAnna Mendl Shaw is a site-specific choreographer and dance educator. Her company, The Equus Projects, has gained national and international recognition their large-scale performances made for dancers and horses, each work made in collaboration with local equestrians and horses. The company has toured throughout the United States and most recently in Sweden. The company has been produced by major arts and equine presenters including Bates Dance Festival, the Flynn Center for the Performing Arts, The Myrna Loy Center for the Performing Arts, the Saratoga Arts Festival, and New York City’s the River-to-River Festival. The Equus Projects is the recipient of a 2008-9 ERPA grant from the Rockefeller Foundation that supported its innovative community engagement. In 2012 The Equus Projects launched OnSite NYC, an annual series of site works without horses created for urban landscapes. OnSite NYC presents a unique site work every month with funding from the Lower Manhattan Cultural Council and the NYC Department of Cultural Affairs. Integrates her work with horses into the human movement experience with innovative investigations of physical listening and choreographic structures. Shaw has taught on the faculty at NYU/Tisch School of the Arts, The Juilliard School, in the Ailey/Fordham BFA program and at Marymount Manhattan.

**ALBERTO DEL SAZ** (Choreographer) Alberto del Saz is the Co-Artistic Director of the Murray Louis and Nikolais Dance Company, the Director of The Nikolais/Louis Foundation for Dance as well as an Assistant to Mr. Louis. His focus is to preserve the Nikolais/Louis technique, repertory and legacy through teaching and directing. Mr. Del Saz work has been funded by NYSCA in collaboration with Ice Theatre of New York. He has choreographed for World bronze medalist figure skater Nicole Bobek and Olympic bronze medalist and World Professional Champion Philippe Candeloro. His skating work has appeared on Ice-Wars, Grand Slam and the Professional World Championships televised on CBS, FOX and ABC networks, as well as the official opening of the Rockefeller Center sponsored by Champions on Ice.

## **ABOUT THE COMPANY**

**ELISA ANGELI** (Performer) Elisa Angeli is an Italian ice dancer who competed on the International circuit. Elisa is a circus arts specialist and performs with ITNY as a principal skater and aerialist. In 2009, she participated at the Première of Wintuk by Cirque du Soleil at Madison Square Garden. Elisa has also performed in Europe with Dynamic Shows, and 'Spotlight Productions.' She recently returned from Italy where she was an aerialist with the tour: 'Italian Champions on Ice' with Ghiaccio Spettacolo. Thanks to her silk act, Elisa is one of the few performers in the world combining ice-skating and aerial arts. Elisa has been with ITNY since 2008.

**BRENT BOMMENTRE** (Performer) Brent is the 2008 and 2009 US Bronze Medalist in ice dancing with partner Kim Navarro. He is also the 2008 Four Continents Bronze Medalist. Brent and Kim represented the United States at the World Championships in 2010. In addition to skating for two years as a principal with Holiday on Ice, he has appeared in an episode on Glee, and recently as part of the group 'Aerial Ice' on America's Got Talent. This year he performed for the first time with 'Stars on Ice.' Brent has skated with ITNY since 2009.

**RYAN BRADLEY** (Performer) Ryan Bradley is the 2011 National United States Men's Champion. He is also the 2007 U.S. silver medalist and three-time U.S. Collegiate Champion. Ryan is known for his crowd-pleasing programs and back flips. He can be found entertaining vacationers in skating shows aboard the Royal Caribbean Liberty of the Seas cruise ship, participating in the NBC televised Disson Skating specials, teaching seminars, mentoring young skaters, and skating in charity shows. This past year marked his second year touring with 'Stars on Ice.' He is currently headlining 'Sun Valley On Ice,' legendary ice shows taking place every Saturday night in Sun Valley, ID. This is Ryan's second season with ITNY.

**KURT BROWNING** (Guest Performing Artist) is a 4-time World Champion and four-time Canadian national champion, who also represented Canada three times in the Winter Olympics. His other achievements include three Canadian Professional Championships, three World Professional Championships, a Lou Marsh Trophy for top Canadian Athlete and two Lionel Conacher Awards. He is an Order of Canada recipient (in 1990), and he

received an American Skating World Professional Skater of the Year Award (in 1998), and a Gustav Lussi Award from the Professional Skaters' Association (in 2001). Kurt is the first man to land a quadruple jump in competition. He has made frequent appearances since turning professional in 1994. He is also a choreographer, and a commentator for CBC since 2006. Known as 'The Kid from Caroline' and 'Skate God Jr', the skater has been known for taking on various guises on the ice, from clown to flamenco dancer and cowboy, and is recognized for his fast footwork and personal charisma. He was inducted into Canada's Sports Hall of Fame in 1994 and Canada's Figure Skating Hall of Fame in 2000. He was honored with a star on Canada's Walk on Fame in 2001. He also appeared in the 2006 Fox television program *Skating with Celebrities*. Starting in 2009, he is the co-host of *Battle of the Blades*.

**EVE CHALOM** (Performer) Eve is a 2-time US Silver Medalist in ice dancing with former partner, Matthew Gates in 1997 and 1999. She competed twice at the World Figure Skating Championships. After receiving degrees in English and Philosophy from the University of Michigan, Eve moved to New York City and performed as a modern dancer, performing for choreographers such as Carlos Orta, Heather Harrington, and Geraldine Cardiel. Eve just completed her master's degree in Dance/Movement Therapy while living in Chicago. She currently performs and choreographs for the Chicago-based skating companies Ice-Semble and American Ice Theatre. She is grateful to Ice Theatre for giving her the space and time to bring her two loves of modern dance and ice-skating together. She also wants to thank her family and friends for their support. Eve has been the rehearsal director for ITNY and has skated with the company since 2002.

**PATRICK CONNELLY** (Performer) Patrick is a 6-time US National ice dance competitor. He started skating in Jamestown, NY, taking lessons from Lenel vanden Berg. Subsequently, he trained at the University of Delaware. Patrick attended the American Academy of Dramatic Arts to study acting. Now he is studying Alexander Technique and singing with Beret Arcaya. He would like to thank Douglas Webster and Moira North for this wonderful opportunity and his parents for their love and support. This is Patrick's 2nd season with ITNY.

**JOEL DEAR** (Performer) Joel is a 2-time U.S. National Medalist and a four-time U.S. Figure Skating team member. In addition to skating, Joel works as a professional dancer and aerialist. He has performed in numerous professional ice-skating and dance shows around the world. Most recently, he competed on America's Got Talent as a member of 'Aerial Ice.' He has been an ITNY company member since 2008 and is happy to be back for the fall season.

**CARLY DONOWICK** (Performer) Carly was on the US International Ice dance team for two years. Since 2006, she has performed in over 35 countries around the world touring with *Holiday on Ice*, *Disney on Ice* and Willy Bietak Productions. Carly is pursuing a degree from Buffalo State in fashion design and hopes to one day design wedding dresses and work as a figure skating choreographer. This is Carly's first season with ITNY.



**JONATHON HUNT** (Performer) Jonathon was the 2003 World Junior Pairs Bronze Medalist. He was also a 2004 US Senior pairs medalist. He has been a principal performer in shows around the world including the Rockefeller Christmas Spectacular for 5 years, the Whiskers Holiday Ice Spectacular, and the Ice Mystique show in Ocean Park, Hong Kong. He has also been a part of the ensemble cast of the Tribute 2 show in Atlantic City, and Fantasy on Ice, in Fukui, Japan. Being part of the US International Team from 1999-2005 has given Jon a great perspective about coaching skating. Jonathon has skated with ITNY since 2011.

**JESSICA RENEE HUOT** (Performer) Jessica is a 6-time Finnish National Ice Dance Champion with Juha Valkama. They competed in the World and European Championships in 2002, '03, and '04. Jessica received her Bachelor of Science in 2006 from the Massachusetts Institute of Technology, majoring in Brain and Cognitive Sciences. She went on to earn her Master of Music degree in Piano Performance from New York University in 2012. Jessica currently directs the Skating School at Sky Rink in NYC where she also teaches skating. Additionally, Jessica teaches private piano lessons in the NYC area. Jessica and Juha skated with ITNY in 2006, and Jessica has continued performing with the company since 2010.

**TYRRELL GENE** (Performer) Ty is a 5-time US National ice dance competitor. Dance was a form of physical therapy for Ty as he recovered from a stroke inducing paralysis on his left side when he was a child. His love for dance is what led him to competitive figure skating. Ty continues his cross training of dance and expands into areas of jazz, ballet, modern and ballroom. He is a wonderful teacher of many disciplines. Ty has skated with ITNY since 2001 including both of its' French tours.

**JOHN KERR** (Performer) John is a 7-time British ice dance champion with his partner and sister, Sinead. He is also a 2-time European Bronze Medalist, and has ranked as high as No.2 in the ISU World Rankings for Ice Dancing. He competed in 2 Olympic Games. Sinead and John were trained by 2 time Olympic Champion Evgeny Platov. He has performed all over the world and was on the cast of 'Stars on Ice' with Sinead last year. This is John's second season with ITNY.

**KIM NAVARRO** (Performer) Kim is a 2-time US National Bronze Medalist in ice dance with partner, Brent Bommentre. California native, Kim Navarro graduated from Columbia University, cum laude, with a degree in English and a minor in Dance. She was on the US World Team. She and Brent were principal pair skaters with 'Holiday on Ice' for two years, recently performed with 'Stars On Ice,' and continue to skate in the summer 'Sun Valley On Ice' shows. Kim and Brent were featured in an episode of the television show Glee last winter, and performed as part of the act 'Aerial Ice' in the quarter-finals of this season's America's Got Talent. She first skated with Ice Theatre of New York in 1999.

**ERIN REED** (Performer) Erin was a United States National Junior Ladies Medalist and Senior National competitor. Erin also represented Team USA Internationally. She was the 2007 Collegiate National Silver Medalist. Erin graduated with a business marketing



degree from the University of Utah in 2008. This is Erin's 2nd season with ITNY. Erin has most recently performed for Willy Bietak Productions on various Royal Caribbean cruise ships and as a soloist in the 'Sun Valley on Ice' summer show as well as for other distinguished companies around the world. This is Erin's 2nd season with ITNY.

**SONIA RODRIGUEZ** (Guest Performing Artist) Sonia Rodriguez Ice Theatre Gala co-Honoree and Kurt Browning's wife is a First Soloist with the National Ballet of Canada. After joining the company in 1990, she was promoted to Second Soloist in 1995 and to First Soloist in 1997. In 2000 she became Principal Dancer. A Toronto native, Sonia moved to Madrid, Spain, at age five, and trained there with Pedro de la Cruz and at Princess Grace Academy in Monaco. In 1989 she won the Enrico Cecchetti award (Grand Prix) at an international competition in Capri. She has performed in numerous key classical roles, including Odette/Odile in James Kudelka's 'Swan Lake', the title role in Giselle, Juliet in 'Romeo and Juliet', Kitri in 'Don Quixote', and Princess Aurora in 'The Sleeping Beauty', as well as in many Balanchine ballets. In 1996, she appeared in Paul Taylor's 'Company B' before 30,000 people at Toronto's Skydome. She was also selected by Suzanne Farrell to dance the lead role in the world premiere of her re-staging of Balanchine's 'Don Quixote' at the Kennedy Center in Washington D.C. In 2004, Sonia appeared in 'The Sleeping Beauty' pas-de-deux and 'Cinderella' excerpts at Stars of the 21st Century. She has also created several roles, such as the title role in Kudelka's 'Cinderella', and roles in Matjash Mrozewski's 'A Delicate Battle' and Jean-Pierre Perreault's 'The Comforts of Solitude'. Sonia has also an acting career, with appearances in films such as 'The Planets and The Four Seasons', as well as television specials including 'Gotta Skate I and II', and her hosting of the Toronto Olympic bid concert at Roy Thomson Hall in 2001. She is married to Kurt Browning, and together they have two sons, Gabriel and Dillon. In 2012, she was added to Canada's Walk of Fame.

**CHENAULT SPENCE** (Lighting Designer) Chenault Spence is renowned throughout the world as lighting designer for opera, ballet and theatre. He has been a lighting designer for thirty years for Alvin Ailey American Dance Theatre and has received two Emmys for his work on The Damnation of Faust and Un Ballo in Maschera with Luciano Pavarotti for The Opera Company of Philadelphia. In addition to The Ice Theatre of New York, he is a resident lighting designer for Alvin Ailey American Dance Theatre, Dance Brazil, New York Baroque Dance Company, Saeko Ichinohe Dance Company and the Long Leaf Opera Company. He has also done work for Lyon Opera Ballet, Dance Theatre of Harlem, Washington Ballet, Erick Hawkins, Jose Limon, Bat-Dor Dance Company of Israel and The National Ballet of Iran, amongst other theatre and ballet companies throughout the world.

**RENA RANÉ WAITS** (Production Manager) Rena Rané Waits is from Dallas, TX. She is thrilled to be returning to Ice Theatre of New York. Currently a senior studying Stage Management at The Conservatory of Theatre Arts at Webster University in St. Louis, Missouri. She has worked with theatres such as The Repertory Theatre of St. Louis, Six Flags Over Texas, Timber Lake Playhouse and The Little Theatre on the Square. A huge amount of gratitude goes out to her Gingin and Grandpa!

**KAREN YOUNG** (Costume Designer) Karen Young has designed costumes for numerous dance and video art projects and has recently been teaching at the Rhode Island School of Design. Her design work for dance can be seen in the repertoires of the Martha Graham Dance Company, Morphoses, American Ballet Theater, Armitage Gone! Dance, Benjamin Millepied, Dusan Tynek, Pam Tanowitz, Brian Brooks, and Pascal Rioult among many others. She has collaborated with many renowned video artists, including designing costumes for David Michalek's "Slow Dancing" and "Portraits in Dramatic Time" at Lincoln Center Festival, Matthew Barney's "Cremaster 5" and "Cremaster 1", and Eve Sussman's "89 Seconds at Alcazar" and "The Rape of the Sabine Women". Recent projects include: the new off-Broadway show "Fighting Gravity", Third Rail Projects Bessie Award winning immersive show "Then She Fell", and Wendy Whelan's new production "Restless Creature" with choreographers Alejandro Cerrudo, Josh Beamish, Brian Brooks, and Kyle Abraham. karenyoungcostume.com

**NATALIA ZAITSEVA** (Performer) Natalia is a Russian Master of Sport in Pairs Skating. She studied in the Academy of Olympic Reserve in Yekaterinburg and Moscow Academy of Sport. Her professional career started with Moscow on ice. She worked for Disney on Ice for 14 years, had an opportunity to travel allover the world and she's had a wonderful time playing many beloved Disney Characters in her career. Her roles have included Snow White, Belle in Beauty and the Beast, The Little Mermaid, Jasmine in Aladdin, Mulan, Megara from "Hercules", Nalain The Lion King. For the past summers she has skated in 'Sun Valley on Ice' as adagio pair skater. This is Natalia's 1st season with ITNY.

## THE CAST



Elisa Angeli



Brent Bommentre



Ryan Bradley



Eve Chalom



Tyrrell Gene



Patrick Connelly



Joel Dear



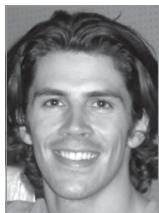
Carly Donowick



Jonathon Hunt



Jessica Huot



John Kerr



Kim Navarro



Erin Reed



Natalia Zaitseva

# SPECIAL ACKNOWLEDGMENTS

to these individuals and others whom we might have missed



## BOSTON, MA

Paul Danner • Brooke Frieling  
Tim LeBlanc • Tammi McManus  
Colleen O'Brien • Tammy Perlman  
Doug Zeghibe • Sally Zeghibe  
The Skating Club of Boston Staff & Volunteers

## PLYMOUTH, NH

Anne Marie Brayton • Nicole Cochrane  
John Fernandes • Dave Gyger  
Susan McKimens • Carol Ann E. Morrison  
Sharen K. Tedrow • Amanda Whitworth  
Plymouth State University Ice Arena  
The Ninth State Movement Complex

## NEW YORK, NY

The Entire Sky Rink Staff including:  
Jim Bugenhagen, General Manager  
Ken Benson, Exec. Dir. of Figure Skating  
Patricia Pierre, Special Events Manager  
Neil Walsh, Exec. Dir of Maint. & Operations  
Hector Vega, Director of Maintenance  
Sky Rink Maintenance Crew

Judy Blumberg

Pam Farr & Scott Irvine  
for Sun Valley Resorts

Charles Kerner, Accountant

Lisa Navarro

ProSkate NJ

Scott H. Schwartz, Graphic Design

The Schulz family's Karen Kresge Collection  
for Ice Theatre of New York – Jeannie Schulz

MERCHANDISE PROVIDED BY  
Imagine It Embroidery

MUSIC EDITING BY  
Phil Lee, Cityvox

PHOTO CREDITS  
Aleksandar Antonijevic  
David W. Carmichael  
Keri Pickett  
Darial Sneed  
www.foto-schramm.com (cover)

## SPECIAL THANKS TO

Jeff & Mary Abel, Lisa Marie Allen, Lana Breazeale,  
Paula Caputo, Catherine Chalmers, Spencer Cordovano, Barbara Danielson,  
Diane & Keith Dick, Mike & Vicky Elizondo, Joan & Marty Erdheim, John Fernandes,  
Judy & Rick Firtel, Footlight Dance Center, Jason Fry, Debbie Gordon, Stephanie Grosscup,  
Betsy Hauck, Anita Hartshon & Frank Sweiding, Zui Hanafusa, Peter Hendricks,  
Nancy Hepburn & the Wasatch Figure Skating Club, Scott Irvine, Courtney Kapp,  
Terri Katz, Daisy Langley, Christine Lee, Elizabeth Mathieu, Brent McCarty,  
Susan McKimens, Linda McMahon – The Goldmine, Max Monahan, Carole Ann Morrison,  
Mountain Express, Frank Munaco, Dave & Molly Nemetz, Kent Perry, Nancy Quaife, Marc Oliver,  
Lisa & Ron Reed, Larry Shoenike, David Seelig, Mark Sheehan,  
Angelo Silveri, Alison Smart, Sun Valley Ballet, Sun Valley Blog, Sun Valley Resort, The Sun,  
Martha Sword, Alex Tregre, Felisa Vanoff, Kim Verde, Linda Vilella,  
John & Missy Voinovic, Karen Weeks, Wood River YMCA

## FUNDERS

Gertrude Vanderbilt Endowment • Will Sears Fund • Bloomberg Philanthropies • Dance/NYC  
Lisa McGraw Figure Skating Foundation • The Pioneer Fund and our generous private patrons



Ice Theatre of New York is supported, in part, by public funds from the  
NYC Department of Cultural Affairs, in partnership with the City Council.

**THANKS TO ALL OF OUR ICE THEATRE VOLUNTEERS**



## OUR FAMILY OF SUPPORT

### Gertrude Vanderbilt Endowment

Designated to support the development of choreography for dance on ice.

Vicki Abelson  
Jill Abitbol  
Stephen Adler  
AFA Protective Systems  
AIG Matching  
Grants Program  
George & Leslie Akst  
Tenley Albright  
Karen Alstadt  
Anonymous  
Aileen Arenson  
Jeffrey Arnstein &  
Michael Field  
Natalie & Christopher  
Augustine  
Rose Auslander  
Pamela Averick  
Josh Babb  
Michael Barrett  
Craig Bayer  
Denise Beaumont  
Bill & Bunny Beekman  
John Belle  
Leslie Beller  
Susan Berens Walberg  
Lorraine &  
Carswell Berlin  
Bietak Productions  
Robin Blauer  
Lucy Joyce Brennan  
Patricia Brockway  
Dorian Brown &  
Steven Haas  
Rebecca Budig &  
Michael Benson  
George & Maryjo Budig  
Stuart U. Buice  
Dick Button

Nathalie &  
James Carey  
Susan Ceccarelli  
Chelsea Piers  
Management  
Angela Chiang  
Craig Cichy  
City Ice Pavilion  
Dr. Rena Clarkson  
Mike Clayton  
Sharon Cohen  
Tom Collins  
J. Edward Cossitt  
Irene Colton  
Janet & Leonard Connolly  
Rusty Constine  
Howard Cortez  
Jill Cosgrove  
Elizabeth Courtney  
Michael Cunningham  
Frank D'agostino  
Dance/NYC  
Nicholas Davies  
Rose Davies  
Wallace J. Davis  
Louise Dawe  
James Dechman  
Nina Devine  
Betsy DiFelice  
Stephen Disson  
Phil Donahue  
Christina Dumbadse  
Diane Dumbadse  
Sonya & Peter Dunfield  
Richard Dwyer  
Mary Eagan  
Christina Elwell  
Merle N. Englander

Marianne &  
Robert Engle  
Entertainment Industry  
Foundation  
Stephen G. Epstein  
Epstein Plastic Surgery  
Peter Eurich  
Andrea Ewing  
Karen Fang  
Kenneth Feld  
Charles Fetter  
Mary & Gregory  
Ferguson  
Carol J Ferrentino  
Kathlin Feuerstein  
Julie Firestone  
Richard Fischler  
Janine Florence  
Theresa Foy  
Linda Fratianna  
David Free  
Brooke Garden  
Clara Garduno  
Robin & Leonard Garner  
Mertz Gilmore  
Foundation  
Audrae Gillespie  
Virginia Glover  
Diane Glynn Samuelsen  
Betty Goedhart  
Judy Gooderham  
Troy Goldstein  
Debbie & Robert Gordon  
Ann Greenthal  
Robert Grossman  
Beverly Grossman  
Chalfen  
Addie Guttag  
Marni Halasa  
Michon Halio  
George Hambrecht  
Dorothy Hamill  
& John MacColl  
Tracie & Scott Hamilton  
Dorothy Harder  
Harlick &  
Company, Inc.  
Karyn Henschel  
Matt Herson  
Dorothy Hill  
Valerie & Jim Hoffman  
Marni Hogg  
Barbara D. Holland

Taffy Holliday Pergament  
Jill Howell  
HPP Rinx Inc.  
Amy & John Hughes  
Myrna Beth Hurwitz  
Stephen Hyle  
Ice House  
Ice Rink Events  
Ice Skating Institute  
Louise & Worth Loomis  
Maria Jelinek  
Elizabeth &  
Edward Johnson III  
Joan Kane Josephson  
Marilyn &  
Joseph Kasputys  
Terri Katz  
Katzman Ernst Family  
Foundation  
Charles A. Kerner  
John A. Kerr  
Susan Kittenplan  
Barbara Kolton  
Jess Korman  
Ron Kraut  
Karen Kresge  
King Kullen  
Melanie Lambert  
Bonnie Lavonne Legg  
Marc Lebel  
Ruth Legon  
Shannon Lenihan  
Willie Cunningham  
Leone & John Leone  
Joe Lertola  
Joe Levine  
Terri Levine  
Valery Levine  
Levinson Family  
Philanthropic Fund  
Anne Lichtblau  
Linda Lin  
Page Lipe  
Mary Jo Lloyd  
Shirley Loedel  
Long Island Win  
& Spirits Merchants  
Elaine Louie  
Marianne Lynn  
Bruce MacArthur  
Valerie Manning  
Melanie Maslow  
Douglas Mattis

Georgia Mauch  
 Julia McFarlane  
 Lisa McGraw Figure  
 Skating Foundation  
 J. McLaughlin  
 Edward Meagher  
 Sue and Robert Mellins  
 Robert Metcalf  
 Doris Michaels  
 Robert Middleton  
 Nicole Miller  
 Wendy Mlinar  
 Irene Muehlbronner  
 Kristine Mueller  
 Margaret Murphy  
 Francine Mozer  
 Estate of Marian  
 Naumburg  
 Lisa Navarro  
 Nazem Family  
 Foundation  
 Susan Neiman  
 Nestlé  
 Netter Foundation  
 Dorothy Ann Nelson  
 Margaret & Willard  
 Nelson  
 The Netter Foundation  
 New Jersey Figure  
 Skating Foundation  
 Judith Nichols  
 Nancy & Barton  
 Nisonson  
 Noodle Education  
 Kerry Novick  
 Maria O'Connor  
 N. Carl Olsson  
 Original Media  
 Katharina Otto-Bernstein  
 Patricia Patterson  
 Anya S. Piazza  
 Pier Sixty LLC  
 The Pilates Movement  
 The Pioneer Fund  
 Josef Pinlac  
 Francine Port  
 Kathy Presto  
 Carol Probst  
 PS Star Games  
 Quilty Powers  
 Bernard Rattray  
 Redwood Empire  
 Ice Operations

Lisa Reisfield-Cilluffo  
 Dawn T. Rogner  
 Deborah Roll  
 Verdery Roosevelt  
 Robin Roth-Moise  
 Donna Ryan  
 Susan B. Ryckman  
 Lydia C. Schurman  
 Rhea & Paul Schwartz  
 Charles Scribner  
 Margarita Sears  
 Kenneth Shelley  
 Clare Sheridan  
 Nancy Sherman  
 Tetiana & Myroslaw  
 Silecky  
 Angelo Silveri  
 Judy Sladky  
 Toni Slotkin  
 Catherine &  
 Richard Smith  
 Julia Smith  
 Snoopy's Home Ice  
 Joseph Peter Spang  
 Erwin & Pearl Staller  
 Jan Staller  
 Barbara Stanton  
 JoJo Starbuck  
 Starbucks Community  
 Service Program  
 Jonathan Stine  
 Nancy Streeter  
 Adele & Bob Sweet  
 Iren J. Tar  
 Randall Tarasuk  
 Sheila Thelen  
 Judy & David Thomas  
 Judy Thompson  
 Angela Ting  
 Shane Hackney Todd  
 Trump Organization  
 Lisa Trattner  
 US Figure Skating  
 V & C Battin  
 Foundation  
 Gerty Verbiwksi  
 Desjardins  
 Marei Von Saherc  
 Anne C. Vose  
 Barbara Wagner  
 Mary Wallace  
 William Wall-Enborn  
 Donald Webster

Susan & Nolan  
 Weinberg  
 Robin Weingast  
 Alan Weinstein  
 Catherine Weisblum  
 Frances Jean Wells  
 Sally & George Wells  
 Westside Skate & Stick  
 Barbara &  
 Michael White  
 Connie Williams  
 & Tom Roden  
 Atoy Wilson  
 Betsy & Doug Wilson  
 Joan Wilson  
 Toby Wolf  
 Wonderland on Ice  
 World Ice Arena LLC  
 Beth Woronff  
 Janice Woynarski  
 Stacie Young Krinsky  
 Ari Zakarian  
 Aja Zanova

### **In Kind Support**

AD+  
 American Girl Place  
 Arte Salon  
 Artisanal Group  
 Josh Babb  
 Blue Ribbon Bakery  
 Capezio  
 Chelsea Piers, LP  
 Chenault Spence  
 Lighting  
 Classic Harbor Cruises  
 Citi Pond at  
 Bryant Park  
 City Ice Pavilion  
 Daryl Roth  
 Debevoise &  
 Plimpton, LLP  
 Carlos Falchi  
 Figure Skating  
 in Harlem  
 Fireworks Sports  
 Marketing  
 Gramercy Park Flowers  
 The Golf Club  
 at Chelsea Piers  
 HRC  
 Ice Rink Events

ICE-WATCH  
 Icenetwork.com  
 Lance Lappin Salon  
 Lifeskate.com  
 MAC Cosmetics  
 Markt on Ladies Mile  
 Linda McMahon,  
 The Goldmine  
 Miya Shoji  
 One if by Land,  
 Two if by Sea  
 Joe Quesada,  
 Marvel Comics  
 Rink Management  
 Services  
 Riverbank State Park  
 Michael Rollins  
 School of the Visual Arts  
 Photography Class  
 Scott Schwartz Designs  
 Sheer Print Solutions  
 Sky Rink at  
 Chelsea Piers  
 Jerry Solomon,  
 Star Games  
 Skating Club of  
 New York  
 The Sports Center  
 at Chelsea Piers  
 The Rink at  
 Rockefeller Center  
 Tracy Watts Millinery  
 USFS  
 Sofia Vandaele,  
 The London NYC  
 WB Wood  
 Weber County Ice Sheet  
 Westchester Skating  
 Academy  
 Wollman Rink  
 World Ice Arena

### **And all of our other Generous Patrons.**

7/1/12 - 6/30/13





# SUNSET TERRACE



[chelseapiers.com/specialevents](http://chelseapiers.com/specialevents)

212.336.6777  
events@chelseapiers.com

Sky Rink features a  
dedicated event space,  
**Sunset Terrace**,  
that can accommodate  
up to 300 guests.

**Corporate Outings**  
**Weddings • Reunions**  
**Bar & Bat Mitzvahs**  
**Milestone Birthdays**  
**Not-for-Profit Events**

# International FIGURE SKATING

NEVER  
MISS  
AN ISSUE

Only \$29.<sup>95</sup> for a  
One-Year Subscription  
(U.S. Only)

Call 1-800-437-5828  
or go online to  
[ifsmagazine.com](http://ifsmagazine.com)

*Exclusive*  
Interviews  
with Past,  
Present and  
Future Stars

*Stunning*  
Photography



NOW  
AVAILABLE  
on Your iPad  
or iPhone



# ice watch

CHANGE. YOU CAN.



10 ATM

[facebook.com/ice.watch](https://facebook.com/ice.watch)  
[www.ice-watch.com](http://www.ice-watch.com)